

Dental Caries (Cavities)

Bacteria in the mouth feed on dietary sugars.

Bacteria make acid which make the mouth acidic.

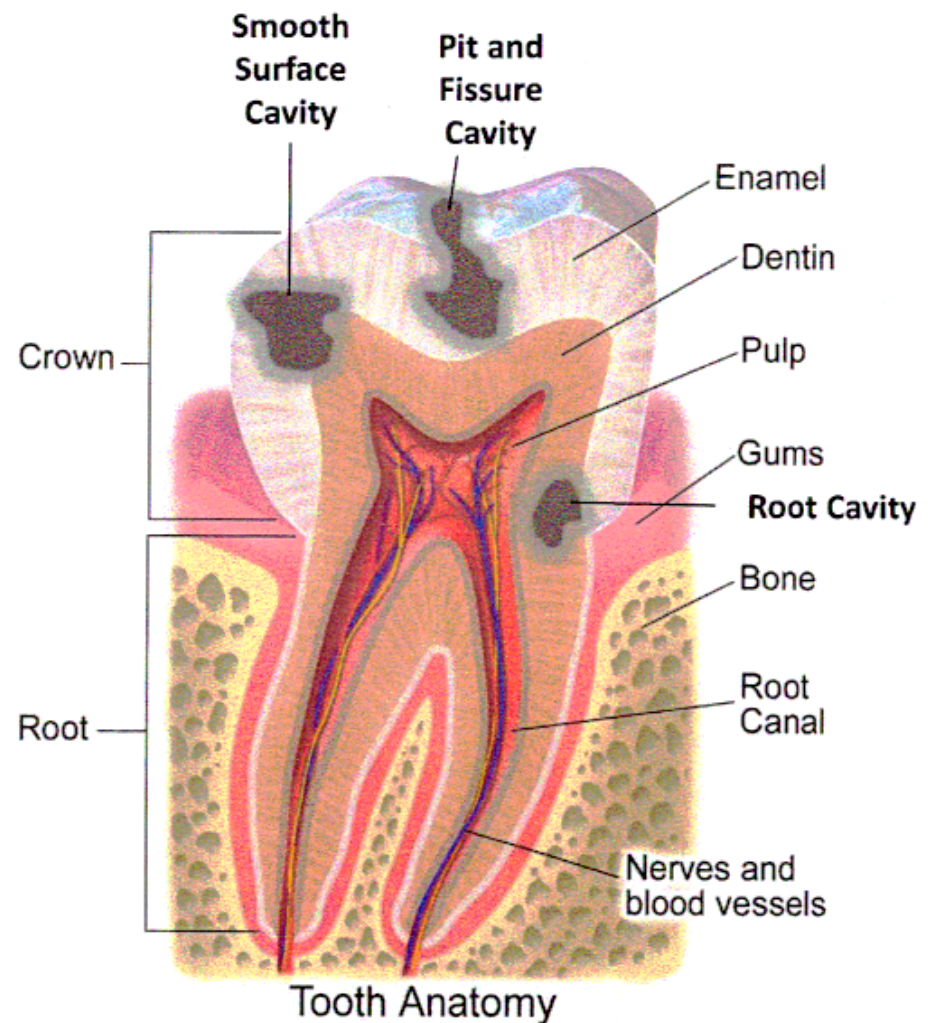
Acid erodes minerals out of healthy tooth enamel.

Acid decays (rots) the tooth and causes a cavity (hole).

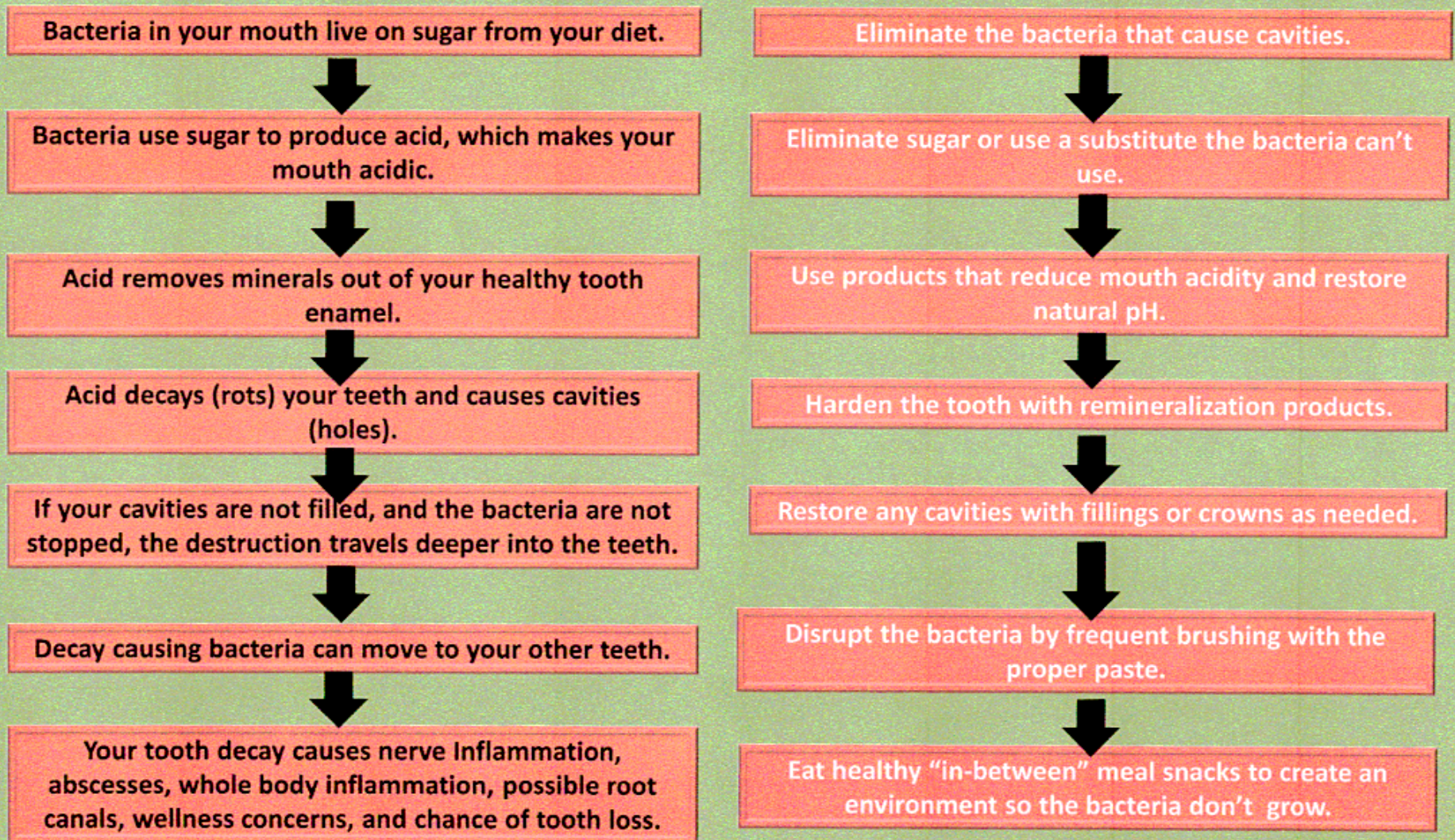
If the cavity is not filled, and the bacteria are not stopped, the decay penetrates deeper into the tooth.

Decay causing bacteria move to other teeth.

Decay into the tooth pulp causes Inflammation, abscesses, systemic inflammation, a need for root canals, wellness concerns and possible loss of the tooth or teeth.



Cavity Management Strategies





Acidity (pH) of Common Drinks

Adapted from 21stcenturydental.com

